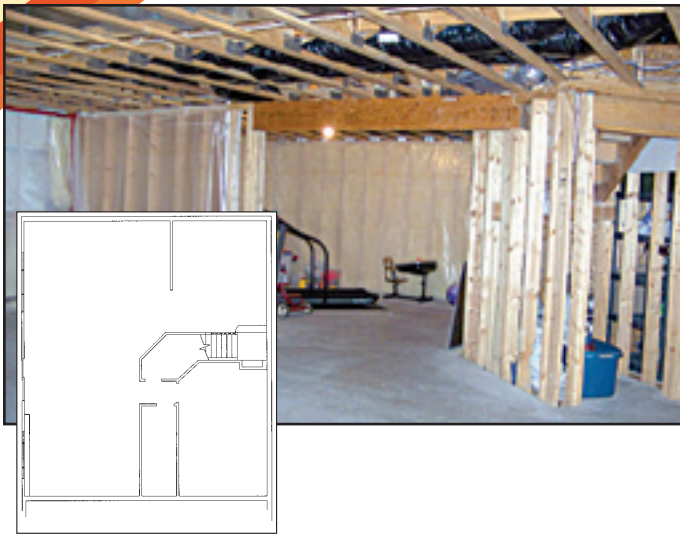


2215 Baihly Heights Drive SW

BEFORE

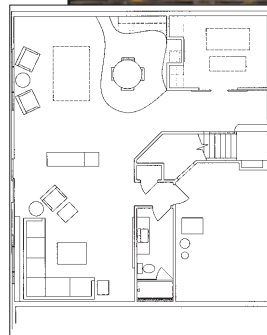


AFTER

Project Goals:

1. Modern approach to design.
2. Create a functional entertainment space.
3. Use an intriguing palette of materials and finishes to define each area.

Directions: Hwy 52 South; merge onto Salem Road SW via Exit 54B; take the 1st right onto Fox Valley Drive SW; take the 3rd left onto 23rd Avenue SW; take the 2nd left onto Baihly Heights Drive SW; 2215 Baihly Heights Drive SW is on the left.



Many design requests were addressed to create the ideal multi-purpose Lower Level. Media and game area is divided with a two-sided fireplace that features a dramatic angled wall. The Kitchenette was designed with espresso cabinetry with birch twig panels, cork floor and a linear tile backsplash with glass accents. The exercise room showcases a custom color concrete troweled floor and sliding doors with birch twig panels, as used in the Kitchenette. Bathroom features a "floating vanity" and vessel sink.