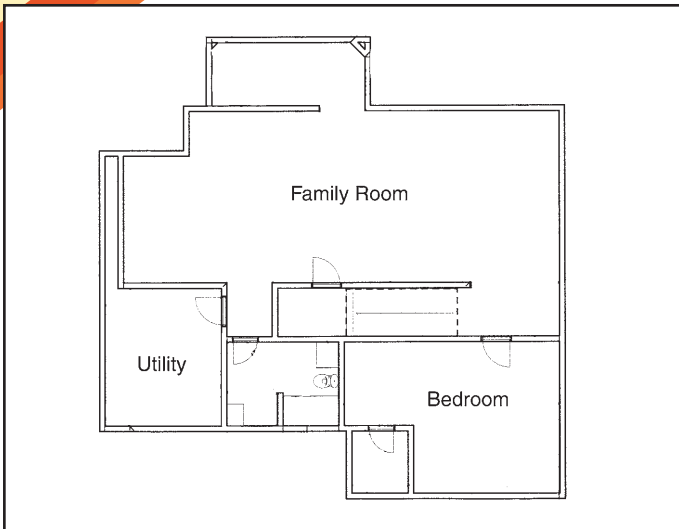


3397 Tralee Lane NE

BEFORE



AFTER



Project Goals:

1. Design a space to suit the clients' needs and lifestyle.
2. Maintain the architectural details and quality found throughout the rest of the home.
3. Provide a convenient, stress free, enjoyable remodeling experience.
4. Completing the project within clients' budget and on schedule.

Directions: From Century High School on East Circle Drive NE (Cty. Rd. 22) go east on Viola Road; turn right on Shannon Oaks Blvd. NE; turn left on Tralee Lane NE.

A full basement finish with a bar, fireplace, and bathroom. Beautiful rustic hickory cabinets and woodwork with painted trim and doors give the space a beautiful contrast of color. The fireplace has a natural stone surround with custom hickory mantel and built-in cabinets. The bathroom consists of a custom tile shower with glass door and separate make up station with swivel make up mirror and lighting. A wrap around walk behind wet bar with seating, granite counter tops and custom hickory wrapped beam and post is the main focal point of this basement. The painted accent crown on the bar post ties the painted trim into the lightly stained rustic hickory woodwork.



Builders License#20636929
3841 Willow Heights Drive SW • Rochester, MN 55902
507-259-4232
eliasconstructionllc.com